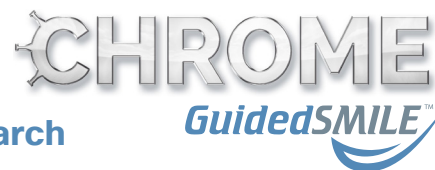


Single Arch

edentulous surgical arch | opposing edentulous non-surgical arch



PHOTOGRAPHS

- ☐ 1. Full face full smile
- ☐ 2. Full face exaggerated smile
- ☐ 3. Full face profile
- ☐ 4. Center retracted in occlusion
- ☐ 5. Left retracted in occlusion
- ☐ 6. Right retracted in occlusion

For ideal
smile design

For verification
of bite

- The patient should wear any existing prostheses in the photos.
- Photograph the patient standing up, looking directly at the camera.
- Capture photos before taking impressions to keep the lips and teeth clean.



Good photos



Bad

MASTER CASTS / IMPRESSIONS

- ☐ Capture impression of opposing denture, teeth only



Full palate, no holes



Missing palate



Missing anatomy

BITE REGISTRATION

- ☐ Bite registration – full occlusion or CR bite

- Ensure the patient is in full occlusion or specify if it's a CR bite.
- Use enough material to capture the occlusion, but not too much as to open the bite.
- If the patient has an opposing prosthesis, the patient should wear it to stabilize bite.



Full occlusion



Centric only

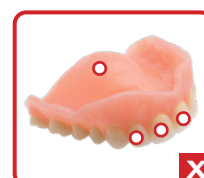
CBCT SCANS - DUAL SCAN PROTOCOL

- ☐ Ensure dentures fit – no rock and proper occlusion
- ☐ Prepare surgical arch denture for scanning – 6 markers

- *Patient has a good denture:* Prepare by placing 6 radiopaque scan markers (www.suremark.com) or 6 gutta percha points randomly in the pink area of the labial and buccal flanges.
- *Patient has a poor denture:* Either fabricate a new denture, perform a hard relines, or place blue mousse inside the denture to stabilize. Soft relines are NOT acceptable.
- *Patient does not have a denture:* A new denture or scan appliance must be fabricated.



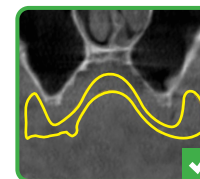
○ Scan markers,
placed randomly



Do not place on
teeth/intaglio

- ☐ CBCT scan dentures in the mouth, in occlusion, not separated
- ☐ CBCT scan surgical arch denture alone resting on foam, not plastic

- Scan must include the patient from the chin up to the nasal cavity.
- Do not scan the patient alone without their dentures.
- Export DICOM files (.dcm) from the CBCT into a patient folder- this should contain 200-400 individual .dcm files. Zip the patient folder and upload with Rx.



Denture fully
seated, no voids



Denture not fully
seated, black voids