

# Single Arch

dentate surgical arch | opposing dentate non-surgical arch

## PHOTOGRAPHS

- 1. Full face full smile
- 2. Full face exaggerated smile
- 3. Full face profile
- 4. Center retracted in occlusion
- 5. Left retracted in occlusion
- 6. Right retracted in occlusion

For ideal smile design

For verification of bite

- The patient should wear any existing prostheses in the photos.
- Photograph the patient standing up, looking directly at the camera.
- Capture photos before taking impressions to keep the lips and teeth clean.



Good photos



Bad

## MASTER CASTS / IMPRESSIONS

- Capture ALL land areas of both arches

- Must capture full palate if temporary denture is to be ordered.
- If the patient has a partial for the surgical arch, capture impressions with and without the partial seated.



Full palate, no holes



Missing palate



Missing anatomy

## BITE REGISTRATION

- Bite registration - full occlusion or CR bite

- Ensure the patient is in full occlusion or specify if it's a CR bite.
- Use enough material to capture the occlusion, but not too much as to open the bite.
- If the patient has an opposing prosthesis, the patient should wear it to stabilize bite.



Full occlusion

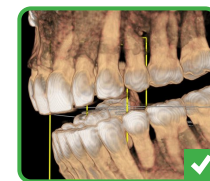


Centric only

## CBCT SCANS

- CBCT scan OPEN position, denture out of the mouth

- Have the patient bite on cotton rolls or the scanner bite fork.
- Place cotton rolls between cheeks and teeth for a better image.
- If the field of view only allows one arch, send individual scans of each arch.
- Export DICOM files (.dcm) from the CBCT into a patient folder- this should contain 200-400 individual .dcm files. Zip the patient folder and upload with Rx.



Bite is open



Bite is closed